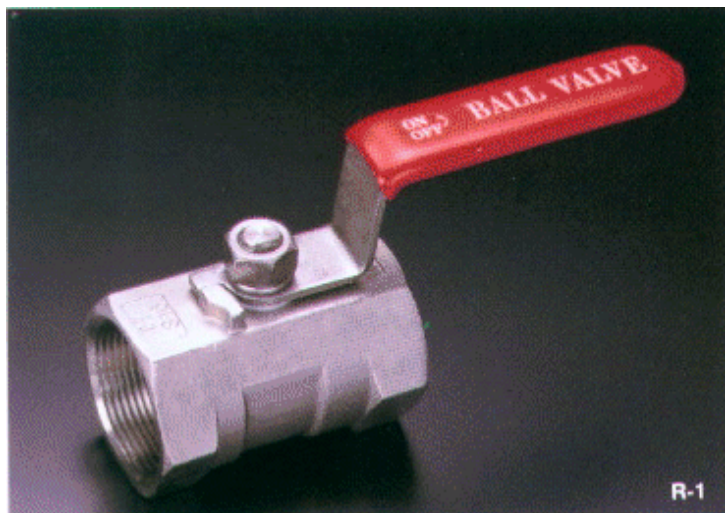


# R-1 1-PC BALL VALVE

## STAINLESS STEEL BALL VALVE

### SCREWED ENDS



#### FEATURES

Pipe thread in accordance with ANSI B2.1, BS 21 1973, DIN 259/2999

Blow-out proof stem/reduce bore

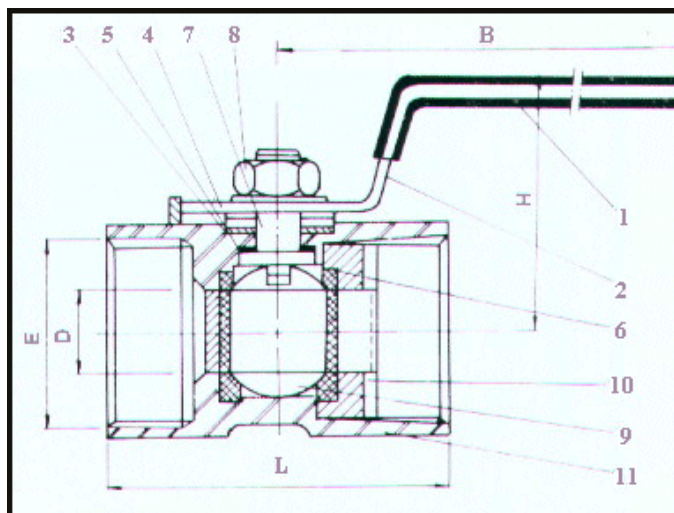
Investment casting body

800 PSI (55 BAR) W.O.G./1000 PSI (69 BAR) W.O.G.

Material ASTM-CF8M A351.

ASTM-CF8 A351

NR	PART	QTY	316	304
11	BODY	1	SUS 316	SUS 304
10	INSCREWED PART	1	SUS 316	SUS 304
9	BALL	1	SUS 316	SUS 304
8	STEM NUT	1	SUS 304	SUS 304
7	STEM	1	SUS 316	SUS 316
6	SEAT	2	PTFE	PTFE
5	STEM PACKING	1	TEFLON	TEFLON
4	PACKING RING	2	SUS 304	SUS 304
3	THRUST WASHER	1	TEFLON	TEFLON
2	HANDLE	1	SUS 304	SUS 304
1	PLASTIC COVER	1	PLASTIC	PLASTIC



SIZE	Cv FACTOR	TORQUE INCH LB'S	Kg
1/4	4.0	12	0.07
3/8	4.0	12	0.11
1/2	4.5	12	0.17
3/4	9.0	18	0.25
1	16	36	0.40
1.1/4	24.0	54	0.57
1.1/2	37	72	0.82
2	68.0	84	1.30

PRESSURE TEMPERATURE RATING

**R-1 TYPE 1/4 - 2"**

