

NAMUR Mounted, Type C25, 'P' Series Solenoid Valve



Description

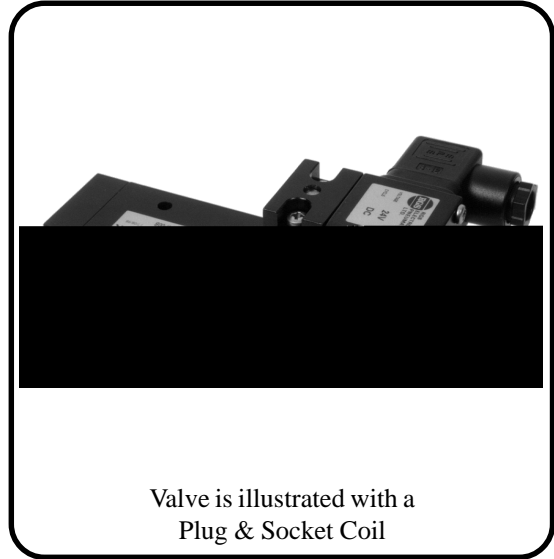
Solenoid valve designed for direct mounting onto 1/4 turn pneumatically operated valve actuators meeting 'NAMUR' standard fixing dimensions.

Features

- Interchangeable CNOMO interface coil units, including various hazardous area options.
- Side face air connection.
- 1/4" BSP mains air connection and 1/4" BSP exhaust ports.
- Recirculating air to spring end of actuator. (ETS)
- Single coil spring return function or double coil stay put function.
- Pilot Exhaust Dust Caps fitted as standard.

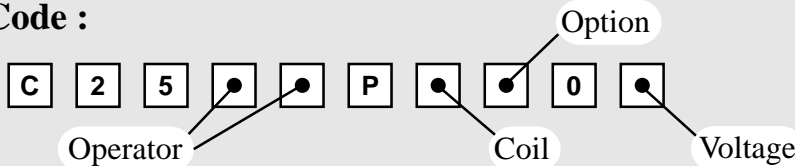
Conversion Facility

- Built in 3/2 (ETS) to 5/2 function conversion facility for spring return and double acting actuators respectively. (see reverse)



Valve is illustrated with a Plug & Socket Coil

Product Code :



See below for product code details

Any of the below options that are not required enter '0' in relevant box.

Operator

Options:	Code:
Spring return, internal pilot air feed	1 8
Spring return, external pilot air connection	8 0
Double solenoid, internal pilot air feed	1 9
Double solenoid, external pilot air connection	9 0

Option

Options:	Code:
Screw Driver Override (Standard)	S
Lever manual override	C
No Option Required	0

Coil

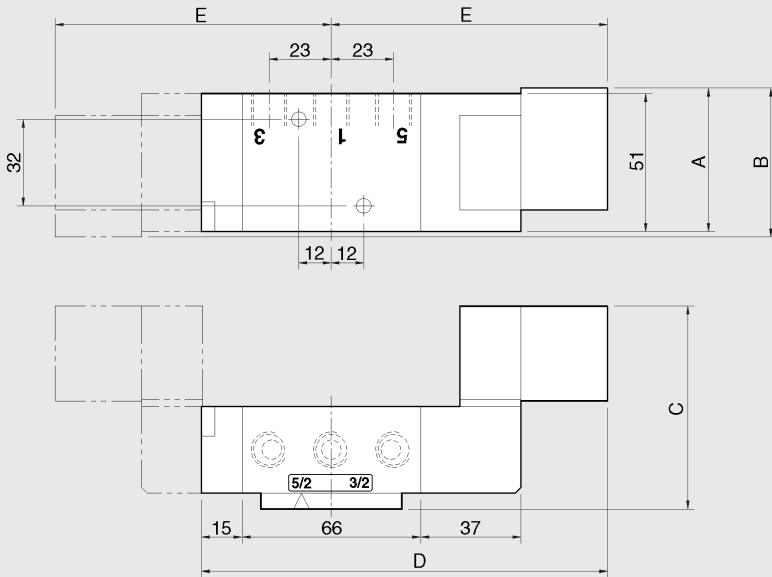
Coil:	Code:	Coil:	Code:
EExia (BASEEFA)	A	EExm	9
EExia (FM)	U	ExN	N
EExia (SAA)	W	Plug & Socket	P
EExia (CSA)	V	MC30 Plug & Socket	K
EExd	D	Terminal Box	B
No Coil Unit	0		

Voltage

Voltage:	Code:	Voltage:	Code:
12v DC	A	24v AC (50/60 Hz)	R
12v DC Low Power	G	48v AC (50/60 Hz)	S
24v DC	B	110v AC (50/60 Hz)	T
24v DC Low Power	H	240v AC (50/60 Hz)	U
No Voltage (no coil)	0	415v AC (50/60 Hz)	3

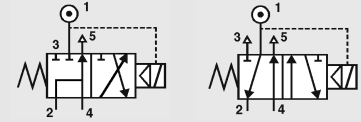
NAMUR Mounted, Type C25, 'P' Series Solenoid Valve

RGS



Conversion Facility :

Valve is fitted with a change over plate which allows the valve to be converted from 3/2 to 5/2 function quickly and easily.



Coil Type	Dimensions (mm)				
	A	B	C	D	E
Plug & Socket	84	116	76	173	125
MC30 Coil	78	104	73	172	124
Terminal Box	74	96	76	173	125
ExN	74	96	76	173	125
EExd	94	136	84	193	145
EExia	74	96	76	188	140
EExm	81	110	76	178	130

Material Specification	Standard
Body and End Caps	Black Anodised Aluminium (Dural)
Spool	Hard Anodised Aluminium PTFE impregnated
Jet	Brass
Spacers	Glass filled Acetal
Seals	Nitrile
Spring	Stainless Steel
Mounting Screws	Stainless Steel
Change over plate	Nylon 66 30% glass filled
Gasket	Nitrile

Valve Specification	Standard
Port Connection Size	1/4" BSP
Working Pressure Internal Pilot Version	3 to 8 bar
Working Pressure External Pilot Version	0 to 8 bar
Minimum External Pilot Pressure	3 bar
Cv Factor	1.2
Flow Rate (at 6 bar with 1 bar pressure drop)	1246 l/min
Maximum Ambient Temperature	+60°C
Minimum Working Temperature	-10°C

Non-Standard Features and Options

There are non-standard alternatives available in addition to those listed within this datasheet for:

- Material Specification
- Valve Specification
- Options
- Voltages

Please refer to Section 9 in this catalogue for details of these alternatives.

Coil Type	Plug & Socket	Terminal Box	ExN	EExd	EExm	EExia
Area Class	Safe	Safe	Zone 2	Zones 1 & 2	Zones 1 & 2	Zones 0, 1 & 2
Area Category	N/A	N/A	ExN II T4/T6	EExd IIC T4/T6	EExm IIC T5	EExia IIC T6
Ingress Protection	IP65	IP65	IP65	IP66	IP65	IP65
Cable Entry	PG.9	M20 x 1.5	M20 x 1.5	M20 x 1.5	Flying Leads	M20 x 1.5
Ambient Temp.	-10 to 60°C	-10 to 60°C	-10 to 40°C	-10 to 40°C	-10 to 65°C	-10 to 65°C
Coil Class	F	F	F	F	F	F